

TECHSOFT

D&T Essentials





**TechSoft UK Ltd, Falcon House,
Royal Welch Avenue, Bodelwyddan, Denbighshire, LL18 5TQ, United Kingdom**
Tel: 01745 535007 Email: sales@techsoft.co.uk
Website: www.techsoft.co.uk

Pricing

Prices shown are correct as of August 2022 for customers in the United Kingdom only excluding delivery costs. Current prices can be found on our website or by email/telephone.

Introduction

TechSoft UK Ltd was founded in the mid 1980s and soon established itself as the market leading supplier of CAD and CAD/CAM systems (Computer Aided Design and Computer Aided Manufacture) to schools, colleges and universities in the UK. Due to customer demand, our Project Management Service was launched in 2007 and since then we have undertaken many successful new-build and re-furbishment projects.

This Product Guide contains our core CAD/CAM products, but we also supply other equipment such as manual machine tools, textiles equipment, art equipment (including pottery) and furniture. Our aim, as always, is to provide the right products at the right price, and with the highest levels of support in the industry.

Our Sales and Support Team

TechSoft's sales and support team spends pretty much every day in schools, colleges or universities, working with teachers in every part of the country to provide training, inspiration and advice about CAD/CAM systems and how best to incorporate them into the Design and Technology curriculum. TechSoft are corporate members of DATA and, as the leading CAD/CAM supplier for UK education, we make it our business to keep up to date with the latest thinking and developments in the subject. Our regionally based personnel have many years of classroom teaching experience between them, and have led workshop re-development programmes in their former roles. They all remain passionate about Design and Technology education in its widest sense.

Leaders in CAD/CAM

TechSoft's flagship CAD software TechSoft Design V3 (formerly known as 2D Design), is now the principal design software in over 7000 schools and colleges and we are main education distributors for SolidWorks - the industry leading 3D design software. We offer the most comprehensive range of CAM systems available (many of which are exclusive to TechSoft) and all are selected and supported to give years of reliable service. But we don't just know about our products, we use them too. Whenever we talk to teacher groups, deliver training, or exhibit at shows, we show-off the huge range of projects that we have created ourselves. All use TechSoft resources, all have curriculum relevance and all demonstrate the 'art of the possible' for students.

Current prices can always be found on our website or by telephoning.

All prices shown are in £ sterling and are exclusive of VAT

Contents

KNIFE CUTTERS	4
Stika SV-8E	5
Stika SV-12E	5
Stika SV-15E	6
CAMM 1 GS-24E	6
LASER CUTTERS	7
LaserCAM Star A2+	8
LaserCAM Star A3+	8
LaserCAM Star A1+	9
LaserCAM GT A2+	10
LaserCAM GT A1+	10
Glowforge Plus.....	12
Glowforge Pro.....	12
3D PRINTERS	13
Flashforge Adventurer 3	14
Flashforge Adventurer 4	14
Flashforge Creator 3 Pro	15
Flashforge Creator 4	15
Flashforge Filaments.....	16
Makerbot Sketch.....	17
Makerbot Method	18
Makerbot Replicator	18
Ultimaker 2+ Connect	19
Ultimaker 3	19
MILLING MACHINES	20
SRM-20E	21
DE-3E	22
MDX-50E	23
SOFTWARE	24
TechSoft Design V3	25
SOLIDWORKS	27
3DEXPERIENCE.....	28
THERMOFORMING EQUIPMENT	30
Formbox.....	31
Clarke 1210 Vacuum Former	32
Clarke 725/750 FLB Vacuum Formers.....	32
Clarke Hot Wire Strip Heater 500	33
Clarke Hot Wire Strip Heaters 600S/D & 1000S/D.....	33
TEXTILES	34
Sewing Machines	35
Single Needle Embroidery Machines.....	36
Sublimation	37
OTHER EQUIPMENT	38



Knife Cutters

Roland Stika Range

Many primary and secondary schools find the Stika knife cutting machines to be an ideal and simple tool for pupils to take their first steps with genuine CAD/CAM activities.

Stika SV-8E



Stika SV-12E



Complete package
is £389 + VAT

Order Code:
MP-STIKA-SV8E

Complete package
is £599 + VAT

Order Code:
MP-STIKA-SV12E

Recommended Software: TechSoft Design V3

Recommended Software: TechSoft Design V3

The ideal, low cost, starter machine for real CAD/CAM activity. The perfect partner for TechSoft Primary V3 as well as TechSoft Design V3 software, and for making small-scale stickers, labels and iron-on logos in a workshop or studio area.

It's still a child-friendly Stika but bigger. This makes it the perfect back-up for an over-worked CAMM 1 as well as an excellent medium-sized knife cutter in its own right.

Interface: USB

Print Alignment: Manual

Max Plotting Speed: 40mm/sec

Max Plotting Area: 160 x 1000mm

Max Plotting Area: 250 x 1000mm

**Each Stika from TechSoft includes a
Free TechSoft Training Pack**



Roland

For details and prices see:
www.techsoft.co.uk/knifecutting

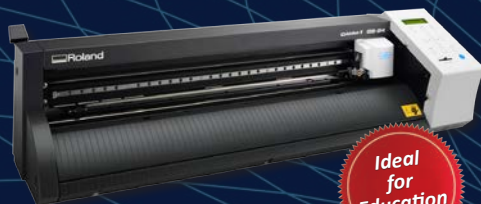
Roland Stika & CAMM 1 Range

Most schools find the GS-24E gives them everything they need with no compromises. The Stika SV15E offers a faster cutting speed and width over its smaller siblings.

Stika SV-15E



CAMM 1 GS-24E



Complete package
is £719 + VAT

Order Code:
MP-STIKA-SV15E

Complete package
is £1,245 + VAT

Order Code:
MP-CAMM1-GS24E

Recommended Software: TechSoft Design V3

Recommended Software: TechSoft Design V3

Largest of all, the SV-15E allows A3-sized media to be handled without trimming and several projects can be 'nested' for economy. The machine cuts at twice the speed of its smaller siblings making it a serious contender.

The Roland CAMM 1 GS-24E is the ideal machine for most busy departments. Fast enough for large or complex vinyl work; it cuts printed card up to A2 size using optical print alignment. Robust and well-proven in schools.

Interface: USB

Print Alignment: Manual

Max Plotting Speed: 100mm/sec

Max Plotting Area: 340 x 1000mm

Interface: USB

Print Alignment: Optical System

Max Plotting Speed: 500mm/sec

Max Plotting Area: 584 x 2500mm

Each GS-24E from TechSoft includes
a Free TechSoft Training Pack



For details and prices see:
www.techsoft.co.uk/knifecutting

Laser Cutters



LaserCAM Star Laser Cutters

The LaserCAM Star Series is our flagship range of laser cutters that come with long lasting reliable air-cooled laser tubes, with an average tube lifetime of 7+ years.

LaserCAM Star A2+



**Complete packages
from £15,765 + VAT**

**Order Code:
MP-LCA2P-30NR**

Recommended Software: TechSoft Design V3

For most schools, this machine offers the ideal balance between work area, cost and space needed in the workshop or studio. 30W of laser power will do everything you ask of it – 60W will do it much faster.

Laser Power: 30 or 60W

Bed Size: 660 x 495mm

Automatic Premium Extraction

Air-Cooled, Metal Tube

TechSoft Training Pack Included

2 Year UK Mainland On-Site Machine Warranty

2 Year UK Mainland On-Site Tube Warranty

LaserCAM Star A3+



**Complete package
is £12,905 + VAT**

**Order Code:
MP-LCA3P-30NR**

Recommended Software: TechSoft Design V3

A compact machine where the extraction system doubles as a wheeled base unit - ideal if the machine has to be shared between rooms, or if space is really tight.

Laser Power: 30W

Bed Size: 450 x 310mm

Automatic Premium Extraction

Air-Cooled, Metal Tube

TechSoft Training Pack Included

2 Year UK Mainland On-Site Machine Warranty

2 Year UK Mainland On-Site Tube Warranty



For details and prices see:
www.techsoft.co.uk/lascamstar

LaserCAM Star Laser Cutters

LaserCAM Star A1+



**Complete packages
from £27,680 + VAT**

**Order Code:
MP-LCA1P-60NR**

Recommended Software: TechSoft Design V3

A compact package for large scale work, the A1+ machine features advanced optical systems to ensure consistent performance across the work area. 100W laser power will clearly be an advantage to achieve maximum throughput for large projects.

Laser Power: 60 or 100W

Bed Size: 1000 x 600mm

Automatic Premium Extraction

Air-Cooled, Metal Tube

TechSoft Training Pack Included

2 Year UK Mainland On-Site Machine Warranty

2 Year UK Mainland On-Site Tube Warranty



What is Included:

Complete Extraction System

High capacity, auto-switching extraction unit with integral air-assist compressor. Self-regulating for optimum flow rate. LCD display to monitor filter condition.

Free Education Training Pack

The Training Pack gives you everything you need to reinforce the training provided on installation and to have the machine earning its keep in the shortest time possible. We have distilled key information into a series of tutorials that will guide you through a series of projects that illustrate the full potential of the machine.



Commissioning & Training

The cost of the LaserCAM Star also includes commissioning and training on the same day.

LaserCAM Star Range Overview

- High Quality Machines
- Air-Cooled Laser Tube
- Long Term Investment (7 years average tube lifetime)
- Direct Control from TechSoft Design V3



For details and prices see:
www.techsoft.co.uk/lasercamstar

LaserCAM GT Laser Cutters

Due to popular demand, TechSoft have now introduced a budget range of laser cutters, the LaserCAM GT Range. These laser cutters have water-cooled CO₂ glass tubes and come complete with a water cooler. Direct Output from TechSoft Design V3 is now available - and this means that the LaserCAM GT range will be the only water-cooled laser cutters on the market to output directly from TechSoft Design V3 - no more DXFs, and no more clunky third-party software required for laser cutting on a budget!

LaserCAM GT A2+



**Complete package
is £6,495 + VAT**

**Order Code:
MP-LGTA2P-80NR**

Recommended Software: TechSoft Design V3

This machine is the smallest in the range but offers a good balance between work area, cost and space needed in the workshop or studio.

Laser Power: 75W

Bed Size: 700 x 450mm

Manual Extraction

Water-Cooled, Glass Tube

TechSoft Training Pack Included

2 Year UK Mainland On-Site Machine Warranty

1 Year UK Mainland On-Site Tube Warranty

LaserCAM GT A1+



**Complete package
is £8,075 + VAT**

**Order Code:
MP-LGTA1P-100NR**

Recommended Software: TechSoft Design V3

With a larger working area, this model will cover most needs for large scale work at an incredibly low price.

Laser Power: 100W

Bed Size: 900 x 600mm

Manual Extraction

Water-Cooled, Glass Tube

TechSoft Training Pack Included

2 Year UK Mainland On-Site Machine Warranty

1 Year UK Mainland On-Site Tube Warranty

LaserCAM GT Laser Cutters

The new TechSoft LaserCAM GT Range of water-cooled glass tube laser cutters benefits from a level of engineering unheard of in machines within this price bracket.

LaserCAM GT Range Overview:

- Water-Cooled Glass Laser Tube
- Built-in Water Cooler
- Built-in Air Assist Compressor
- Links to TechSoft Design V3 via intermediary software - direct output coming during 2022!

Complete Extraction System

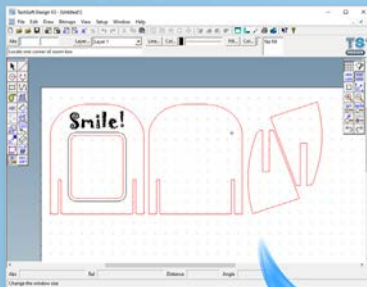
High capacity, extraction unit.

Free Education Training Pack

The Training Pack gives you everything you need to reinforce the training provided on installation and to have the machine earning its keep in the shortest time possible. We have distilled key information into a series of tutorials that will guide you through a series of projects that illustrate the full potential of the machine.

Commissioning & Training

The cost of the LaserCAM GT also includes commissioning and training on the same day.



TECHSOFT
DESIGN **CAM GT**

For details and prices see:
www.techsoft.co.uk/lasercamgt

Glowforge Desktop Laser Cutters

Glowforge water-cooled laser cutters are quick to set up, easy to use, and work with hundreds of different materials. Glowforge machines are built to a high standard, and come packed with innovative features.

Glowforge Plus



**Complete package
is £4,990 + VAT**

**Order Code:
TM-GFPLUS1**

The Glowforge Plus is ready to use straight out of the box and can turn student's ideas into reality at the push of a button.

Glowforge Pro



**Additional Specifications
for the Glowforge Pro:**

**1.5 x Top Speed
120% Cut Speed
Enhanced Cooling
Passthrough Slot**

**Complete package
is £6,990 + VAT**

**Order Code:
TM-GFPRO1**

The Glowforge Pro includes upgraded components, increased laser power, faster cutting speed, and better cooling.

Glowforge Air Filter Included

Online Web Based Glowforge App to output files

Compatibility: JPG, PNG, SVG, PDF and others

40W Laser Tube Power

45W Laser Tube Power

Max Material Size: 515(W) x 455(D)mm

Max Material Size: 515(W)mm, Unlimited Depth

Recommended Extra Glowforge Mobile Workstation

**Workstation
is £697 + VAT**

**Order Code:
SF-CB-GF1**



**For details and prices see:
www.techsoft.co.uk/glowforge**

3D Printers

Flashforge 3D Printer Range

We have been very impressed with the new budget-friendly range of 3D Flashforge Printers. The range includes a small and portable Adventurer 3 and its bigger brother Adventurer 4. There are also two larger machines on offer, Creator 3 Pro and Creator 4.

Flashforge Adventurer 3



TechSoft
Training
Course
Booklet
Included

**Complete package
is £335 + VAT**

**Order Code:
MP2-FFA3**

Flashforge Adventurer 4



TechSoft
Training
Course
Booklet
Included

**Complete package
is £695 + VAT**

**Order Code:
MP-FFA4**

Recommended Software: SOLIDWORKS

Recommended Software: SOLIDWORKS

The Flashforge Adventurer 3 is a light and portable 3D printer and yet so well engineered that the resultant prints look truly professional.

The Flashforge Adventurer 4 is a well engineered 3D printer with many smart features.

- Build Area: 150 x 150 x 150mm
- Detachable Nozzle
- Removable & Flexible Print Bed
- Enclosed Built In Filament Cartridge
- Touch Screen
- Cloud Printing
- Flashprint Software
- Remote Camera Viewing
- Semi-Auto Bed Viewing

- Build Area: 220 x 200 x 250mm
- Automatic levelling platform with an aluminium base
- Flexible bed surface for easy removal of the print
- Model Extruder with a removable nozzle
- Touch Screen
- Automatic filament feed with filament spool holder and filament sensor
- HEPA-13 Air Filter
- Flashprint Software
- Remote Camera Viewing

Flashforge 3D Printer Range

Flashforge 3D Printers are quick to set up, easy to use, and work with hundreds of different materials.

Flashforge Creator 3 Pro



TechSoft
Training
Course
Booklet
Included

**Complete package
is £2,150 + VAT**

**Order Code:
MP-FFC3P**

Recommended Software: SOLIDWORKS

The Flashforge Creator 3 Pro is an ideal machine for secondary schools, colleges, universities and small businesses.

- Build Area: 300 x 350 x 200mm
- Independent Dual Extenders
- Auto bed levelling and auto-calibration in Z-axis
- Filament detection
- Removable flexible build platform
- Built-in camera
- Cloud printing
- HEPA Air Filtration
- Flashprint Software

Flashforge Creator 4



TechSoft
Training
Course
Booklet
Included

**Complete package
is £7,995 + VAT**

**Order Code:
MP-FFC4A**

Recommended Software: SOLIDWORKS

The Flashforge Creator 4 is a multi-functional, flexible and high-performance commercial 3D printer.

- Build Area: 400 x 350 x 500mm
- Independent Dual Extruder
- Stainless Steel Body
- Constant Chamber Temperature of 65°C
- S-type motion control
- High-precision linear guides on the XY axes
- HEPA 13 Air Filter
- 7-inch Smart Touch Screen
- Built-in-camera with remote control
- Printing resumes after recovering from power failure
- Auto power-off

Flashforge Filaments

We offer a wide range of filaments for Flashforge 3D printers - PLA, silk PLA, matte PLA, ABS, HIPS and PVA support filaments.

PLA Filament

Flashforge PLA filaments are affordable, reliable and easy-to-use. The filaments are food-contact compliant, biodegradable, environmentally friendly and safe to use.



Silk PLA Filament

Flashforge silk PLA filaments are high-gloss filaments. The surface of the printed model is silky.



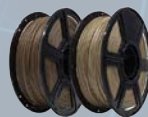
PLA Colour Change Filament

Flashforge Color Change filaments use PLA for the main raw material for production, with the characteristics of temperature-dependent color change.



PLA Wood Filament

Flashforge Wood filaments have 3D printed lines with PLA and wood flour as main raw materials.



PLA Matte Filament

Flashforge PLA Matte are low-gloss filaments. The models printed with this filament have the characteristics of non-reflection and inconspicuous layering.



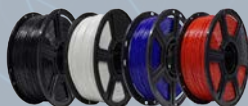
PLA Galaxy Filament

Owing to the particles infused in it, PLA Galaxy Filaments have extraordinary detail performance.



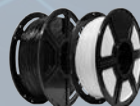
ABS Filament

Flashforge ABS filaments are cost-effective filaments with excellent toughness and temperature resistance.



PETG Pro Filament

Flashforge PETG Pro filaments offer higher heat resistance and better toughness.



HIPS Filament

Flashforge HIPS filaments are very cost-effective filaments with good toughness and excellent temperature resistance.



PVA Support Filament

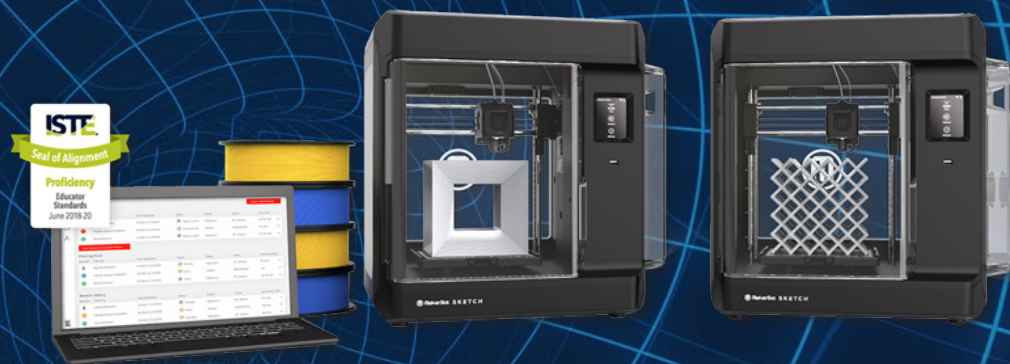
Flashforge premium quality PVA support filament is used to help create complex 3D prints as it can be printed as a solid support that can be washed away with water after printing.



MakerBot 3D Printer Range

MakerBot 3D Printers are one of the most well known 3D printers in the education market.

MakerBot Sketch



Complete package for two machines is £1,545 + VAT

**Order Code:
TM-MBSCB**

Recommended Software: SOLIDWORKS

The MakerBot SKETCH Classroom 3D Printer Package is ideal for those wanting to introduce 3D printing into the classroom. It gives access to over 600 community-driven lesson plans reviewed and approved by MakerBot Education. Find lesson plans designed for grade levels and subjects applicable to your classroom and curriculum.

- Max Build Size: 150 x 150 x 150mm
- Number of Extruders: 1
- Model Material: PLA, TOUGH

What's Included?

- 2 MakerBot SKETCH 3D Printers
- MakerBot Cloud
- 2 Seats in MakerBot Certification for Educators
- 10 Seats in MakerBot Certification for Students
- 6 MakerBot PLA Spools
- 4 Build Plates
- 2 Spatulas
- 2 Snips

MakerBot 3D Printer Range

MakerBot 3D Printers are reliable, simple to use,
and built to the highest standard.

MakerBot Method



MakerBot X is also available that allows printing in a larger variety of materials - see our website for more details.

**Machine only
is £4,305 + VAT**

**Order Code:
TM-MBM**

**Machine only
is £1,720 + VAT**

**Order Code:
TM-MBRP**

Recommended Software: SOLIDWORKS

Recommended Software: SOLIDWORKS

MakerBot Method bridges the divide between desktop prototyping and final part production. It is the most advanced 3D printer, with 21 onboard sensors, WIFI connectivity and a heater chamber.

The MakerBot Replicator+ combines unparalleled performance with superior results and lasting reliability. For greater reliability and precision, the Replicator+ features a redesigned gantry and Z-axis, with strengthened components.

- Max Build Size:
190 x 190 x 196mm (single extrusion)
152 x 190 x 196mm (dual extrusion)
- Number of Extruders: 2
- Model Material: PLA, PETG, TOUGH, PVA Support

- Max Build Size: 295 x 195 x 165mm
- Number of Extruders: 1
- Model Material: PLA, TOUGH

Ultimaker 3D Printer Range

Ultimaker 3D Printers are some of the most advanced, precise and reliable 3D Printers in the world.

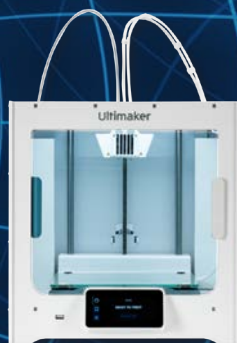
Ultimaker 2+ Connect



*Machine only
is £2,210 + VAT*

**Order Code:
MP-UM2PC**

Ultimaker S3



*Machine only
is £3,875 + VAT*

**Order Code:
MP-UMS3**

Recommended Software: SOLIDWORKS

Recommended Software: SOLIDWORKS

This is a very versatile, efficient and easy-to-use 3D printer that has built-in support of a wide range of materials and delivers consistent printing results.

This is a very powerful 3D printer capable of professional industry-level prints with composite material compatibility and dual extruders.

Model Material: PLA, ABS and more

Extruders: 1

Max Build Size: 223 x 220 x 205mm

Extruders: 2

Max Build Size: 230 x 190 x 200mm

Optional Ultimaker Air Manager

The Ultimaker 2+ Connect Air Manager ensures a safer working environment, providing a closed, inside-out airflow for the Ultimaker 2+ Connect 3D Printer.



Optional PVA Removal System

The Ultimaker PVA Removal Station dissolves support material quickly and effectively, keeping operator time to a minimum and increasing productivity.



Ultimaker

For details and prices see:
www.techsoft.co.uk/ultimaker

Milling Machines

Roland SRM-20E

The SRM-20E is a fully featured 3-Axis CNC milling machine which provides an excellent resource for one-off 2D and 2.5D projects in plastics and common modelling materials.

SRM-20E



**Complete package
is £3,095 + VAT**

**Order Code:
MP-RL-SRM20E**

Recommended Software: TechSoft Design V3

A fully-featured, compact 3-Axis milling machine with exceptional 3D capability. The SRM-20E provides an ideal resource for individual projects and a versatile platform to demonstrate the full range of 2D, 2.5D and 3D CNC milling technology.

The machine includes tools and accessories:

- Slot Drill
- Engraving Tool
- Tool Adaptors
- Sacrificial Bed, Tape
- Variety of Sample Materials for Example Projects

Why Choose a SRM-20E?

Although an entry-level machine, the SRM-20E is designed and built to professional standards specifically to provide in-house SRM (Subtractive Rapid Manufacturing) capability in a professional design studio. In education, an SRM-20E is sufficiently robust to stand the rigours of the classroom but remains a compact, self-contained resource that could safely be moved if required. Output speed and work capacity is ideal for individual student projects and batch production of smaller items.

Axis Travel: 203 x 152 x 60mm

Maximum Feed Rate: 30mm/sec

Spindle Speed: Up to 7000rpm

Resolution: 0.01mm

**Each SRM-20E from TechSoft
includes a Free TechSoft
Training Pack**

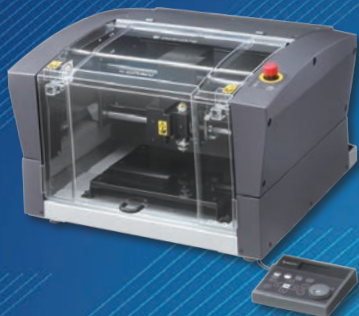


**TS
DESIGN**
CONTROL
**Rolland Miller/Routers
Have Guaranteed
Direct Output from
TechSoft Design V3**

Roland DE-3E

The DE-3E (the successor to the EGX-350E) has been developed by Roland primarily for use as an engraving machine but, with 40mm of usable Z-axis to play with, it is still an excellent 3D capable machine.

DE-3E



**Complete package
is £3,095 + VAT**

**Order Code:
MP-RL-SRM20E**

Recommended Software: TechSoft Design V3

The DE-3E is primarily for use as an engraving machine but, with 37mm of usable Z-axis to play with, it is still an excellent 3D capable machine albeit for shallower models. Operation for 2D work is simple and output is direct from 2D Design V2 with a familiar, simple dialogue to set up tool depths, feeds and speeds.

The machine includes tools and accessories:

- Slot Drill
- Ball Nosed Cutter
- Engraving and VCarving Tool
- Lower Collet
- Extraction Attachment
- Sacrificial Bed, Tape

Why Choose a DE-3E?

With the DE-3E, you will have a versatile and competent machine at surprisingly low cost. The generous bed size, fast axis travel and 50W spindle motor all make the DE-3E a serious contender as a main CNC milling resource. Build quality is superb (as you would expect from Roland) and the machine is quiet enough to run in a workshop or studio environment. The entire machining envelope is enclosed by a robust, interlocked case so safety is assured, and dust and debris will be largely contained.

Axis Travel: 203 x 152 x 60mm

Maximum Feed Rate: 30mm/sec

Spindle Speed: Up to 7000rpm

Resolution: 0.01mm

**Each DE-3E from TechSoft
includes a Free TechSoft
Training Pack**



Roland Modela MDX-50E

The MDX-50 has been built with features to meet the demands and tight-deadlines of professional design studios, but like all Roland equipment this model is simple and intuitive to use and will be equally at home in the school or university workshop.

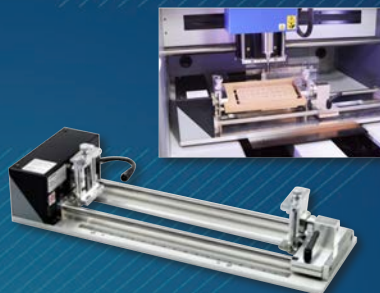
MDX-50E



Complete Package
is £8,850 + VAT

Order Code:
MP-RL-MDX50E

Optional Rotary Axis Unit



Rotary Unit
£3,150 + VAT

Order Code:
RL-MDX50ROT

Recommended Software: TechSoft Design V3

Once again, TechSoft have collaborated with Roland to ensure seamless integration with TechSoft Design V3 (formally 2D Design V2) to make the most of this advanced machine in a familiar software environment.

For automated full-3D machining operations, the optional Rotary Axis Unit means that work can be left unattended from start to finish.

Axis Travel: 400 x 305 x 135mm

Maximum Feed Rate: 60mm/sec (X, Y), 50mm/sec (Z)

Spindle Speed Range: 4500 to 15000rpm

Resolution: 0.01mm

Each MDX-50E from TechSoft
includes a Free TechSoft
Training Pack



Roland Miller/Routers
Have Guaranteed
Direct Output from
TechSoft Design V3

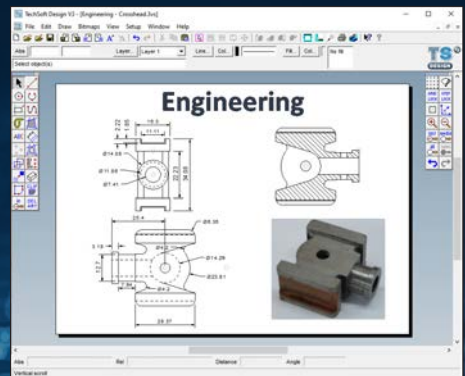
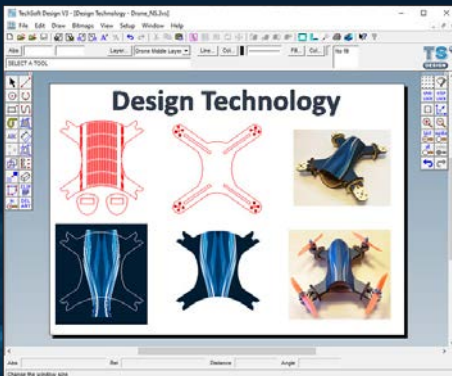
Software



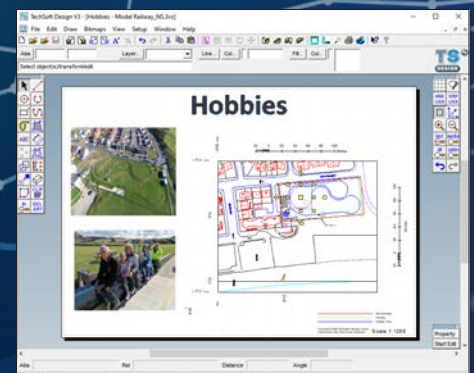
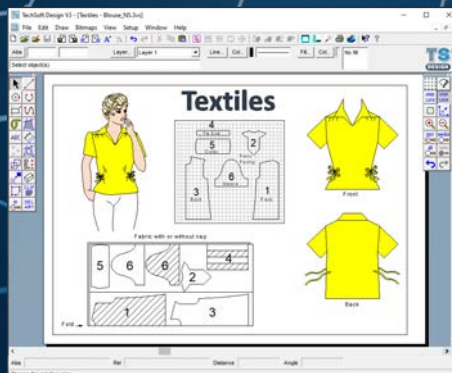
TechSoft Design V3

Graphic Design, Technical Drawing & CAD/CAM

TechSoft Design V3 (formerly known as 2D Design V2) was created for users who require sophisticated drawing and design features, but don't want to spend a lifetime learning to use them. Although designed with professional capability, its ease of use means that TechSoft Design V3 is the CAD standard for the vast majority of UK secondary schools. Whether you need to produce traditional engineering drawings, colourful 'free-form' designs for embroidery, or smart graphical presentation sheets, TechSoft Design V3 has been carefully developed to give you all the tools you need – and all in one place.



"TechSoft Design V3 has the best combination of powerful tools and ease of use available"



TechSoft Design V3

Graphic Design, Technical Drawing & CAD/CAM



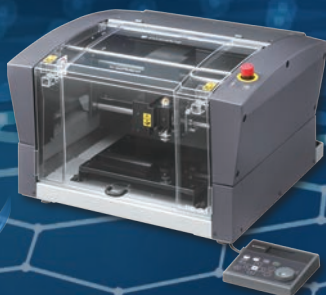
Many CNC machines are
DIRECTLY CONTROLLED
through TechSoft
Design V3 Software



Knife Cutter Output



CNC Miller Output



Laser Cutter Output

Features:

- Exhaustive geometrical constructions including circles, arcs, lines, tangents, normals, etc.
- Comprehensive drawing aids, user-defined grids and attach (snap)
- Powerful tools such as fully tuneable bezier curve drawing, text flow along a path, etc.
- Comprehensive text facilities, even exceeding those in many sign-writing packages.
- Single line fonts and an in-built font editor/designer.
- Bitmap to vector conversion.
- Clip path tools, essential for creating professional high end graphic images.
- Comprehensive graduated, texture and pattern fill routines.
- Comprehensive transformation tools including move, mirror, size, array and distort.
- Automatic or manual dimensioning. Work to pre-set or user-defined scales.
- Contour feature to off-set lines. Invaluable for creating cutter-compensated tool paths or tracing.
- Powerful editing and delete features, unlimited user-named drawing layers. Cut and paste to and from many other packages, including Word.
- Multiple Undos / Redos
- Import/Export BMP, DXF, EMF, HPGL, TIFF, JPEG, PNG, WMF, etc.



For details and prices see:
www.techsoft.co.uk/designv3

SOLIDWORKS

Comprehensive 3D CAD Software Packages

A SOLIDWORKS Licence provides all the CAD functionality needed, at a competitive price and with enough options to create a bespoke solution for learning and research.

As the UK Preferred Education Reseller, TechSoft can provide the knowledge and experience to support course leaders in guiding students towards the qualifications required in modern design & engineering disciplines.



Visual Toolpath



iPod
Docking
Station



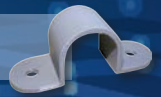
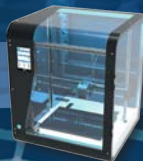
Visual Toolpath



Aluminium
Injection
Mould



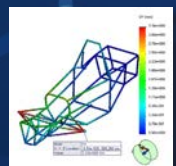
AutoMaker™



For teaching 3D CAD work in Education as well as using the software for Academic Research, SOLIDWORKS provides a range of licences to suit your needs. TechSoft UK Ltd are the recommended Educational distributors for SOLIDWORKS in the UK, having provided over 1000 schools with full education licences. SOLIDWORKS is truly the tried and tested software to use for 3D Design work.

SOLIDWORKS Certification

SOLIDWORKS provides students with powerful yet intuitive 3D Design and Simulation tools they can use to help them achieve success in their exam courses. Employers will value SOLIDWORKS experience and should students wish to formally show their competence they can take the SOLIDWORKS examinations CSWA-Academic & CSDA. The entry fee is normally £68 but with a school licence subscription, entry is free. Teachers too can formally show their competence by passing both the CSWA-Academic and TECE Examinations to gain the SOLIDWORKS Accredited Educators Certification.



For details and prices see:
www.techsoft.co.uk/solidworks

3DEXPERIENCE

3D Designer Cloud Package

For over a decade, SOLIDWORKS Education Edition has been a very popular 3D CAD package for use in education due to its powerful facilities and ease of use, and its recognition in industry. Now Dassault Systemes, the writers of SOLIDWORKS have come out with the cloud-based CAD system called 3DEXPERIENCE. This new package does not require the use of Windows PCs and is available for use on different operating systems and lower specification computers including Macs and Chromebooks.

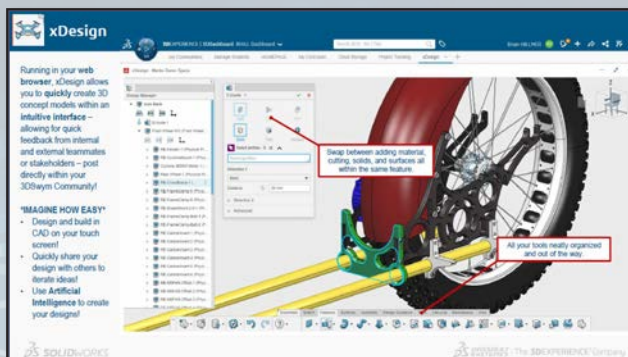


3DEXPERIENCE™

Main Applications:

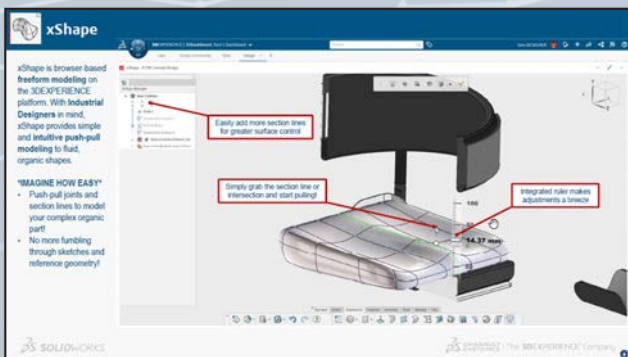
xDesign

xDesign is a browser-based 3D modelling solution that enables designers and engineers to create, review and evaluate 3D Models through easy-to-use parametric modelling capabilities.



xShape

xShape is a lot like clay modelling but on a computer.



3DEXPERIENCE

3D Designer Cloud Package

What are the main features of 3DEXPERIENCE Platform?

No Installation



On the cloud, 3DEXPERIENCE works on multiple devices, requiring only internet access. This solution comes with zero installation and no extra IT efforts.

Instantly Available



The 3DEXPERIENCE platform is instantly available on devices on-the-fly, and fully configured in minutes.

Social Collaboration



Innovate, collaborate and work together in real time with your students with tools to help manage your projects, track your students work and provide feedback.

Dashboard



3DEXPERIENCE is centred around a dashboard which users can easily customise. The dashboard is the platform's control station providing easy access to every part of 3DEXPERIENCE and other sources of information e.g., community news, feeds, pages on the internet.

3DEXPERIENCE for Education offers a new way for students and educators to work in the cloud. The heart of the 3DEXPERIENCE platform is collaboration, making it an ideal environment for a virtual classroom.

The 3DEXPERIENCE platform is available with five package sizes ranging from 10 users to 900 users to meet the needs of diverse institutions in higher and secondary education:

Extra Small	Small	Medium	Large	Extra Large
10 Users	30 Users	100 Users	300 Users	900 Users



Prices:

Package:	Product Code:	Users:	Annual Fee (ex VAT):
Extra Small	3DX-DE-XS-YP	Up to 10 users	£468
Small	3DX-DE-S-YP	Up to 30 users	£720
Medium	3DX-DE-M-YP	Up to 100 users	£1,245
Large	3DX-DE-L-YP	Up to 300 users	£2,060
Extra Large	3DX-DE-XL-YP	Up to 900 users	£3,245

Please note that you do not need a SOLIDWORKS licence in order to purchase a 3DEXPERIENCE subscription.



For details and prices please email us at:
sales@techsoft.co.uk

Thermoforming Equipment

FormBox Desktop Vacuum Former

The FormBox is a compact vacuum former that perfectly compliments a 3D printer in an education setting.

FormBox



Machine only
is £499 + VAT

Order Code:
MM-VACFORM14

With this machine you can:

- Make moulds in seconds
- Quickly replicate 3D Printers
- Case in dozens of materials
- It's compact and simple to use
- Works with any vacuum cleaner



With Formbox, you can bring unique ideas into the real world in hundreds of different ways by choosing from a huge range of materials to work with; giving you the freedom to develop new and creative ways of getting kids engaged with learning.

TechSoft FormBox Education Bundle Includes:

- 50 Form Sheets
- 50 Cast Sheets
- 20 Clear Sheets
- Mini Vacuum Cleaner
- 1kg of Casting Material
- 3 Starter Templates
- Universal Vacuum Adaptor
- Mayku Teach Online Curriculum

Complete Bundle
is £699 + VAT

Order Code:
MM-VACFORM14P



For details and prices see:
www.techsoft.co.uk/formbox

Clarke Vacuum Forming

These vacuum forming machines from Clarke quickly, efficiently and consistently produce professional quality, high definition vacuum formings.

Clarke 1210 Vacuum Former



*Machine only
from £1,990 + VAT*

**Order Code:
MM-VACFORM2**

Clarke 725/750 FLB Vacuum Formers



*Machine only
from £3,175 + VAT*

**Order Code:
MM-VACFORM1**

Ideal as an individual resource for a systems and control/electronics teaching area, for example, where small packaging and housing projects are a regular need. This unit has single zone ceramic elements for even heat distribution.

Most workshops and Product Design areas will find this scale of machine answers all their day to day needs. These units have 4 -zone ceramic elements with digital control, timing and display for even heat distribution.

Material Sheet Size: 305 x 229mm

Material Sheet Size:
458 x 254mm (725 FLB)
508 x 432mm (750 FLB)

Aperture Size: 280 x 204mm

Aperture Size:
432 x 228mm (725 FLB)
482 x 432mm (750 FLB)

Max Mould Height: 100mm

Max Mould Height: 140mm

Material Thickness: 4mm

Material Thickness: 6mm

Available Extras: Stand

Available Extras: Stands, Reducing Plates



For details and prices see:
www.techsoft.co.uk/vacuumforming

Clarke Strip Heating

Strip heaters are a key resource for plastic working - these capable machines will suit any workshop or design studio and have features to keep fingers away from hot plastic and elements. Clarke machines are simple and effective units for the heating of plastic materials.

N.B. 'D' models are available and have an upper heater beam for thicker and less thermally conductive plastics.

Clarke Hot Wire Strip Heater 500



**Machine only
is £428 + VAT**

**Order Code:
MM-STRIPHEATER3**

A simple 'no-frills' strip heater offering an economical solution for bending thermoplastics up to 4mm in thickness. A single wire is used which allows for tight radius folds.

Clarke Hot Wire Strip Heaters 600S/D & 1000S/D



**Order Codes:
MM-STRIPHEATER1/1D**

**600S Machine only
from £608 + VAT**

**1000S Machine only
from £995 + VAT**

These latest hot wire strip heaters from CR Clarke feature calibrated, adjustable work stops for accuracy, adjustable wire height to suit a range of different materials, and the option of twin heating wires for bending larger radii when needed.

Dimensions: 800(W) x 280(D) x 70(H)mm

Wires Below: 1

Wires Above: 0

Max Sheet Width: 500mm

Material Thickness: 4mm

**Dimensions: 790(W) (600S & 600D),
1360(W) (1000S & 1000D) x 410(D) x 240(H)mm**

Wires Below: 2

**Wires Above:
0 (600S & 1000S)
2 (600D & 1000D)**

**Max Sheet Width:
600mm (600S & 600D)
1000mm (1000S & 1000D)**

**Material Thickness:
8mm (600S & 1000S)
10mm (600D & 1000D)**



**For details and prices see:
www.techsoft.co.uk/stripeaters**

Textiles

Sewing Machines

The Innov-is range of computerised sewing machines offer simplicity without compromising on features and performance. The Start/Stop button allows sewing with or without the foot controller attached – often a health and safety issue for teachers and one less piece of equipment to keep track of. With a 3 year warranty, these machines are an excellent choice for school use.

Innov-is 15



Machine is
£262 + VAT

Order Code:
TM-EMB-INNOV15

Innov-is A50



**Ideal
for
Education**

Machine is
£304 + VAT

Order Code:
TM-EMB-INNOVA50

Innov-is A60SE



Machine is
£340 + VAT

Order Code:
TM-EMB-INNOVA60SE

Innov-is A150



Machine is
£418 + VAT

Order Code:
TM-EMB-INNOVA150

Model:	Innov-is 15	Innov-is A50	Innov-is A60SE	Innov-is A150
No of Stitches:	16	50	60	150 (plus lettering)
Automatic Needle Threader:	Auto	Advanced Auto	Advanced Auto	Advanced Auto
Automatic Buttonhole:	3 Styles (One Step Button Holes)	5 Styles (One Step Button Holes)	6 Styles (One Step Button Holes)	10 Styles (One Step Button Holes)
Cover Type:	Soft	Soft	Hard	Hard

N.B. These products are subsidised for education and can only be supplied to UK bona-fide educational establishments.

brother

For details and prices see:
www.techsoft.co.uk/sewingmachines

Single Needle Embroidery Machines

Embroidery only machines allow teachers to set up a dedicated CAD/CAM embroidery area in their classroom, making the process easier to manage without the chopping and changing of machine parts necessary for dual purpose machines. All the machines have an on-board library of embroidery motifs, borders and fonts and it is possible to combine and edit these using the machine's display and control panel.

Innov-is F440E



This entry-level machine is by no means lacking in features and capability, with 138 impressive built-in embroidery designs to experiment with and combine using the on-screen editing tools.

*Machine is
£779 + VAT*

*Order Code:
TM-EMB-INNOVF440E*

Innov-is NV880E



Featuring a generous work area and a number of advanced features in a smart but low-price package, the NV880E is an easy to operate machine for all pupils.

*Machine is
£1,133+ VAT*

*Order Code:
TM-EMB-INNOVN880E*

Innov-is V3



With a longer arm and a large embroidery area of 300x180mm, the V3 allows for large complex designs to be stitched, or for a number of smaller ones to be grouped together and stitched at up to 1050 stitches per minute.

*Machine is
£1,629 + VAT*

*Order Code:
TM-EMB-INNOVV3*

Model:	F440E	NV880E	V3
Embroidery Area:	180 x 130mm	260 x 160mm	300 x 180mm
Embroidery Speed:	650 Stitches per minute	850 Stitches per minute	1050 Stitches per minute
Embroidery Designs:	138 Built-in (+ 11 fonts)	258 built-in (+ 13 fonts)	224 built-in (+ 17 fonts)

Essential Software: PE Design 11 / Plus 2

N.B. These products are subsidised for education and can only be supplied to UK bona-fide educational establishments.

brother

For details and prices see:
www.techsoft.co.uk/singleneedlemachines

Sublimation

Sublimation printing is an easy and effective way to introduce industry standard digital printing into the classroom environment. It is best suited to man-made fabrics containing polymer-based fibres, making it perfect for transferring designs to technical textiles or those that are difficult to dye under school conditions. A sublimation printing system offers versatility across the whole department with a wide range of opportunities to customise ready-made garments.

Sublimation Full Starter Packs



Sublimation Full Starter Pack A4 (Clam Heat Press)

Includes: Sawgrass Virtuoso SG500 A4 printer with 4 sublimation cartridges, 380 x 280mm clam heat press c/w 2 PTFE sheets, heat resistant tape, ARC mug press, 200 sheets A4 sublimation paper

**Starter Pack is
£933 + VAT**

**Order Code:
MP13-SUB-A4F**

Sublimation Textiles Starter Packs



Sublimation Textiles Starter Pack A4 (Clam/Draw Heat Press)

Includes: Sawgrass Virtuoso SG500 A4 printer with 4 sublimation cartridges, 380 x 380mm clam/Draw heat press with 2 PTFE sheets, heat resistant tape, 200 sheets A4 sublimation paper

**Starter Pack is
£734 + VAT**

**Order Code:
MP13-SUB-A4T**



Sublimation Full Starter Pack A3 (Clam Heat Press)

Includes: Sawgrass Virtuoso SG1000 A4 printer with 4 sublimation cartridges, 380 x 280mm clam heat press c/w 2 PTFE sheets, heat resistant tape, ARC mug press, 200 sheets A4 sublimation paper

**Starter Pack is
£1,950 + VAT**

**Order Code:
MP13-SUB-A3F**



Sublimation Textiles Starter Pack A3 (Deep Swing Press)

Includes: Sawgrass Virtuoso SG1000 A3 printer with 4 sublimation cartridges, 380 x 500mm deep swing press c/w 2 PTFE sheets, heat resistant tape, 200 sheets A3 sublimation paper

**Starter Pack is
£2,625 + VAT**

**Order Code:
MP13-SUB-A3TP**

Other Equipment

Other Equipment

In addition to knife cutters, laser cutter and 3D printers, TechSoft supply a wide range of other equipment such as milling machines, textiles, workshop equipment specifically designed for schools, colleges, and universities.

Milling Routing Turning



Print & Cut



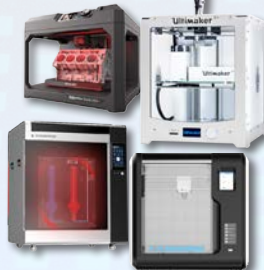
Laser Cutting



Software



Textiles



3D Printing



Workshop Equipment

Alongside CAD/CAM TechSoft also provide:

- **Project Management Service**
New Build Design, Installations & Refurbishments
- **Resources, Training, Servicing and Support**
Onsite Training, Servicing, Online Help
- **Electronics**
PCB Manufacture, Software, Programmable Components
- **Textiles & Image Transfer**
Software, Sewing Machines, Sublimation, E-Textiles, Clothing
- **Art, Design & Ceramics**
Precious Metal Clay, 3D Pen, Pottery, Screen Printing
- **Furniture**
Workstations, Desks, Chairs, Workbenches, Cupboards, Shelving

You can find out more information about our product range on our website:

www.techsoft.co.uk/products



The Educational CAD/CAM Specialists

Website: www.techsoft.co.uk

Email: sales@techsoft.co.uk Tel: +44 (0)1745 535007